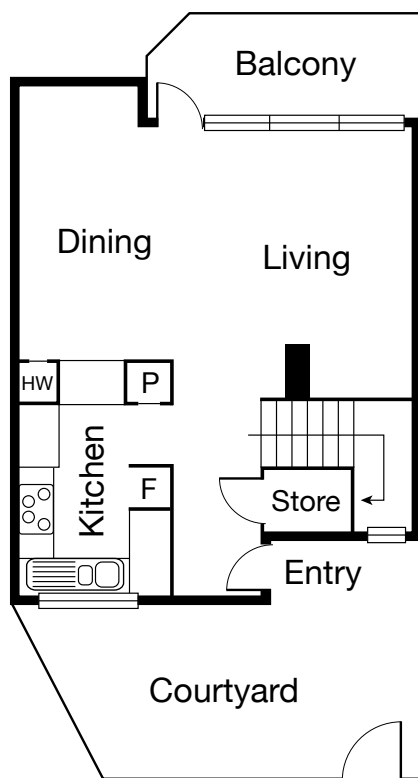


SOUTH MELBOURNE 97 Park Street

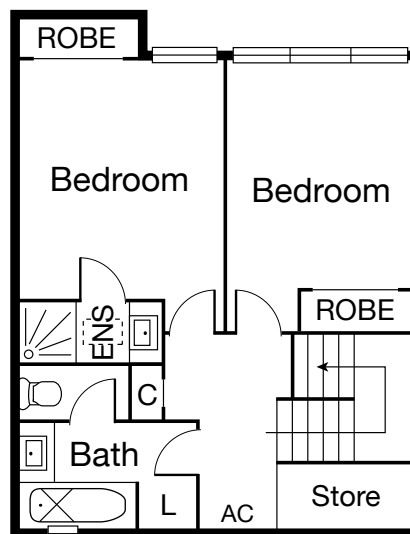


CAYZER

SOUTH MELBOURNE 97 Park Street



Lower Level



Upper Level

PEACEFUL OASIS - "CITY EDGE" TOWNHOUSE

- A sanctuary on the vibrant city fringe, this bright two-storey residence is a unique home in heart of South Melbourne
- Highly coveted "City Edge" complex designed by renowned architect Daryl Jackson, this property overlooks central parklands and features a sunny courtyard
- A short walk from Albert Park Lake, South Melbourne Market, Botanical Gardens and excellent public transportation

Comprising: Entry, kitchen to an open plan living and dining area with balcony and sunny courtyard. Upstairs are two bedrooms with built-in robes, main with ensuite and second bathroom with laundry facilities. There is ample storage, heating, cooling and an undercover car space.

🏠 2 🚿 2 🚗 1

Auction Saturday 23 September at 11am

Inspection As advertised or by appointment

Contact Michael Szulc 0417 122 809
Jordan Gravestain 0448 250 193

Mel Ref 57 H1



Interactive Floorplan

CAYZER

Albert Park 330 Montague Street 03 9699 5999
Port Melbourne 310 Bay Street 03 9646 0812

cayzer.com.au

Every care has been taken to ensure the information contained in this document is accurate. The diagrams/plans are a representation only and are not to scale. Interested parties should seek independent legal advice. Cayzer Real Estate Pty Ltd does not accept any responsibility or liability as a result of the information provided in this document. If your property is currently listed for sale with another agent, please disregard this notice. | Cayzer Real Estate Pty Ltd | CRE20255-078 240817